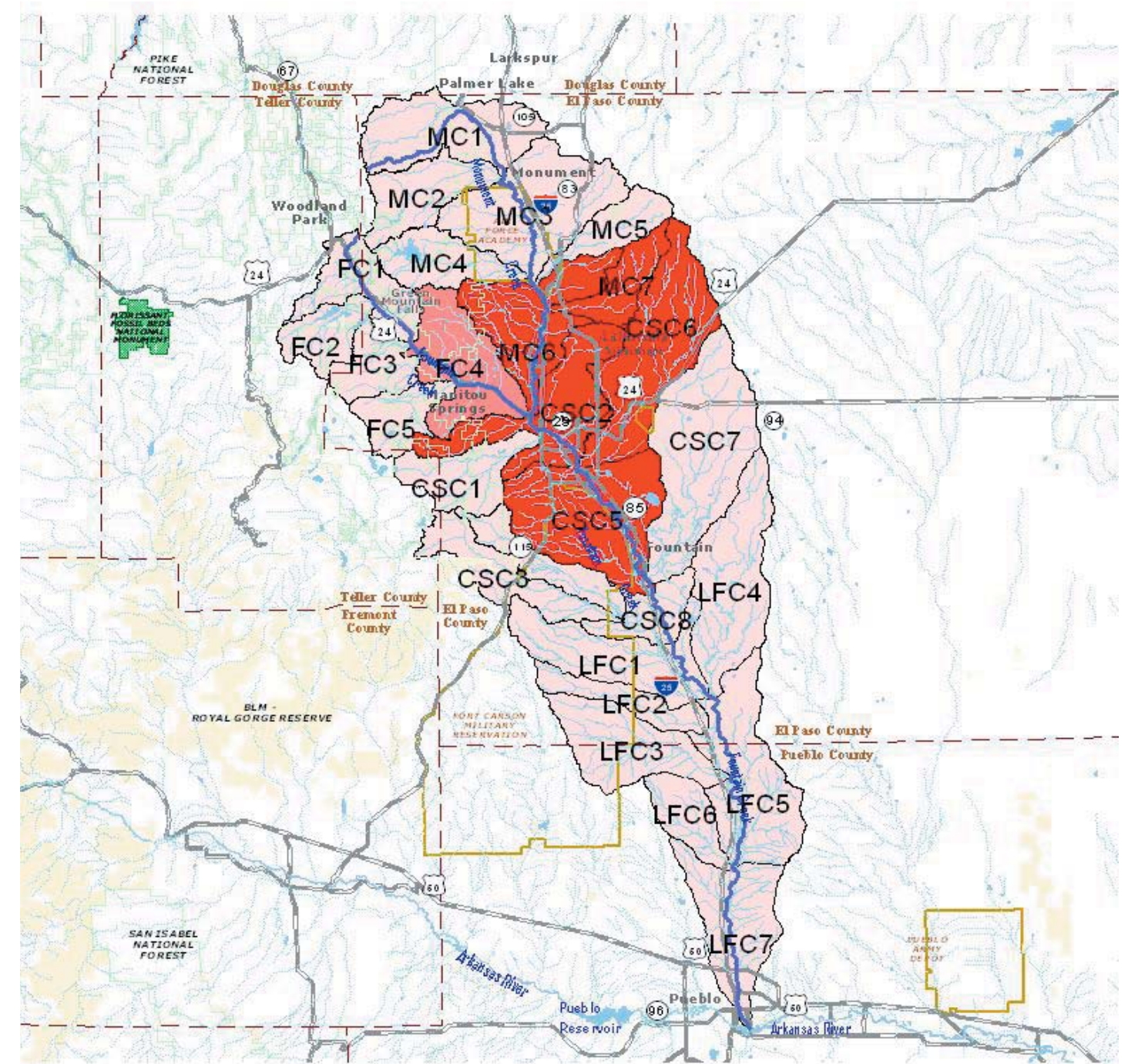


Table 1
Fountain Creek Subwatershed Analysis
Current Impervious Surface Area and Population Growth Projections

Subwatershed Drainage Basins	Code Id	Square Miles	% Impervious Surface Area	Population change per square mile 2000-2020 ¹
Fountain Creek Headwaters				
Upper Fountain Composite	FC1	26	8.0	10
Reservoirs Composite	FC2	18	5.0	ND
Manitou Reservoir Composite	FC3	18	1.0	15
Garden of the Gods Composite	FC4	39	14.0	200
Ruxton Creek	FC5	18	1.0	15
Monument Creek				
North Monument Creek	MC1	43	9.0	260
Beaver Creek	MC2	27	2.0	50
Monument Creek Headwaters	MC3	56	9.0	350
West Monument Creek	MC4	24	5.0	5
Kettle Creek	MC5	17	9.0	250
Lower Monument Composite	MC6	44	39.0	600
Cottonwood Creek	MC7	18	29.0	1300
Colorado Springs Composite				
Cheyenne Creek	CSC1	25	6.0	250
Colorado Springs Composite	CSC2	45	45.0	350
Upper Little Fountain Creek	CSC3	27	1.0	100
Rock Creek	CSC4	20	5.0	50
Cheyenne Mountain Composite	CSC5	62	26.0	230
Sand Creek	CSC6	59	27.0	1000
Jimmy Camp Creek	CSC7	69	7.0	300
Little Fountain Bottom Composite	CSC8	17	10.0	300
Lower Fountain Creek				
Racetrack composite	LFC1	41	6.0	30
Lower Sand Creek	LFC2	17	5.0	10
Young Hollow	LFC3	38	1.0	ND
Williams Creek	LFC4	50	1.0	40
Pinon Composite	LFC5	53	1.0	ND
Steele Hollow	LFC6	18	1.0	ND
Bragdon Composite	LFC7	40	8.0	ND

¹Data was only available for El Paso County; ND = No Data Available

Figure 1
Fountain Creek Subwatershed Analysis: Current Impervious Surface Area



Legend

- Streams
- Highways
- Subwatersheds
- 0-10 % Imp Surface Area
- 11-25% Imp. Surface Area
- 26 - 100 % Imp Surface Area

10 0 10 20 Miles

N
W E
S